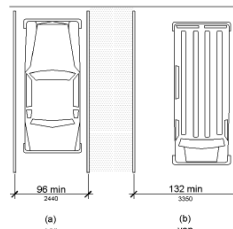


## Inspection Items for B

If a contractor, owner or interior designer is going to change from the plans in the field verify changes with the Architect and Access Specialist. What could affect ADA???

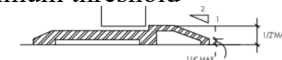
- Does the HC parking have a maximum slope of 2% in all directions? Yes \_\_\_\_\_ No \_\_\_\_\_  
 1.5% slope is best
- Is the width of the HC parking at least 96" with a 96" accessible aisle? You may use 11" & 5" for the first VAN parking space. Yes \_\_\_\_\_ No \_\_\_\_\_
- Is the HC accessible sign a minimum of 60" above the ground. Yes \_\_\_ No \_\_\_



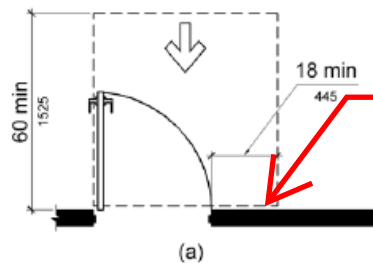
Best to use 1.5% max slope

8' & 8' or 11' & 5'

- Does the sidewalk have a maximum side slope of 2%? Yes \_\_\_\_\_ No \_\_\_\_\_
- Does the accessible route to the front door have a ramp with a maximum slope of 8.33% or 1:12. Yes \_\_\_\_\_ NO \_\_\_\_\_  
 Best to use 7.5% max slope
- Does the front door have a maximum of 1/2" maximum threshold  
 Yes \_\_\_\_\_ no \_\_\_\_\_
- Do all doors have the required 18" of clear floor space on the pull side of the door. This does include the distance from the edge of the bathroom door and the



THRESHOLDS



Sinks or any other fixture cannot be in the clear floor space for the pull requirements.

edge of the sinks.

front approach, pull side

Yes \_\_\_\_\_ No \_\_\_\_\_

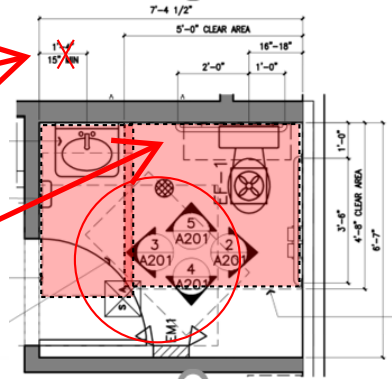
- The front counter where the cash register sits should be a maximum of 36" ( 34" for check writing) high. Yes \_\_\_\_\_ No \_\_\_\_\_
- The checkout counter should be a maximum of 36" high( 34" for check writing). by a maximum of 36" wide at one spot. Yes \_\_\_\_\_ No \_\_\_\_\_
- Does the bathroom sign have Braille on them. Yes \_\_\_\_\_ No \_\_\_\_\_
- Verify-Bathrooms should have 5' diameter turn area of clear floor space.

Yes \_\_\_\_\_ No \_\_\_\_\_

- Verify the 60" wide clear floor for the water closet and 30" wide clear floor

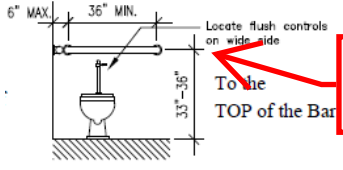
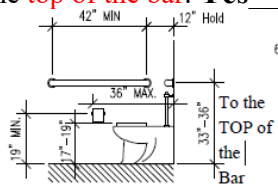
This sink, 15" measurement off the wall is not an TAS requirements.

This 5'-0" is a must, no sink in the clear floor space for the toilet. 5'-1" is best.



space for the sink. Yes \_\_\_\_\_ No \_\_\_\_\_

- Do stall doors have self-closing hinges. Yes \_\_\_\_\_ No \_\_\_\_\_
- Do stall doors have pull handles or levers. Yes \_\_\_\_\_ No \_\_\_\_\_
- If accessible stalls is narrower than 5'-6" ( between 5'-0"min. and 5'-5 3/4") then do you have a minimum of 9" clearance under the stalls. Yes \_\_\_\_\_ No \_\_\_\_\_
- Grab bars on the side and behind the toilet should be 33-36" height measured to the top of the bar. Yes \_\_\_\_\_ No \_\_\_\_\_



Best to mount bars at 34" CL AFF

- Toilet should be 16" to 18" from the wall to the CL of the toilet. Yes \_\_\_\_\_ No \_\_\_\_\_

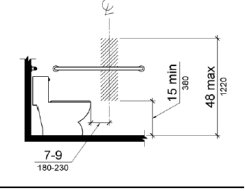
- Toilets are required to be 17-19" high. Yes \_\_\_\_\_ No \_\_\_\_\_

- The flush levers should be on the clear floor side (the side facing the sink). Yes \_\_\_\_\_ No \_\_\_\_\_

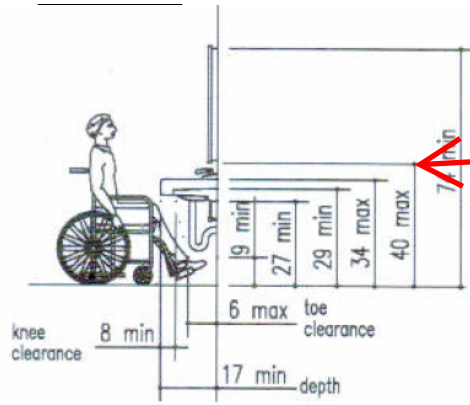
Best to mount sinks at 33 1/2" AFF

- The sink is required to be 34" high maximum in bathrooms. Yes \_\_\_\_\_ No \_\_\_\_\_

- Toilet paper holders are mounted at 15" to 48" to center line above the floor and 7" to 9" in front of the front edge of the toilet. Yes \_\_\_\_\_ No \_\_\_\_\_



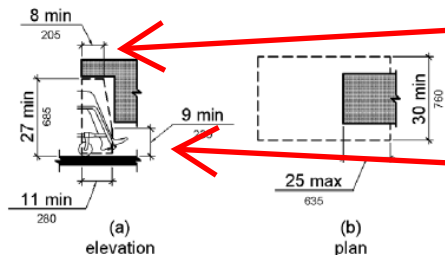
- Mirrors are mounted at 40" up from the floor to the bottom edge. Yes \_\_\_\_\_ No \_\_\_\_\_



Bottom of reflective surface.

- Paper and soap dispensers are required to be a maximum of 48" to the TOP of the highest operating mechanism. Yes \_\_\_\_\_ NO \_\_\_\_\_
- Verify – Pipes under the bathroom sink is required to have the protective plastic wraps on them. Yes \_\_\_\_\_ No \_\_\_\_\_
- Verify- If there are coat hooks installed, is one per area at a maximum of 48" AFF. Yes \_\_\_\_\_ NO \_\_\_\_\_
- If slope board is used verify dimensions, notice the required 8" min. deep knee space at the 27" height. **Cabinet builders miss this.** Yes \_\_\_\_\_ No \_\_\_\_\_

Verify- the minimum 9" AFF toe clearance, I would make this 12" for a safe margin.



this 8" set back of knee space is required at bathrooms and break rooms.

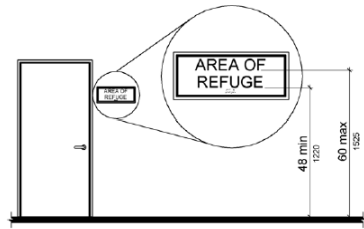
12" AFF is best

- Is the sink 34" high maximum in the break room. Yes \_\_\_\_\_ No \_\_\_\_\_
- Is the microwave within the 48" high reach range. Yes \_\_\_\_\_ No \_\_\_\_\_

33 1/2" is best

- Verify-signage at bathrooms shall be 9" max from edge of sign to door jam on latch side of door, 60" from floor to the top of the sign ( this will be in the tolerance in the detail. Or 60" to the top of bottom of the highest letters and 48" to the bottom of the lowest letters. Yes \_\_\_\_\_ No \_\_\_\_\_

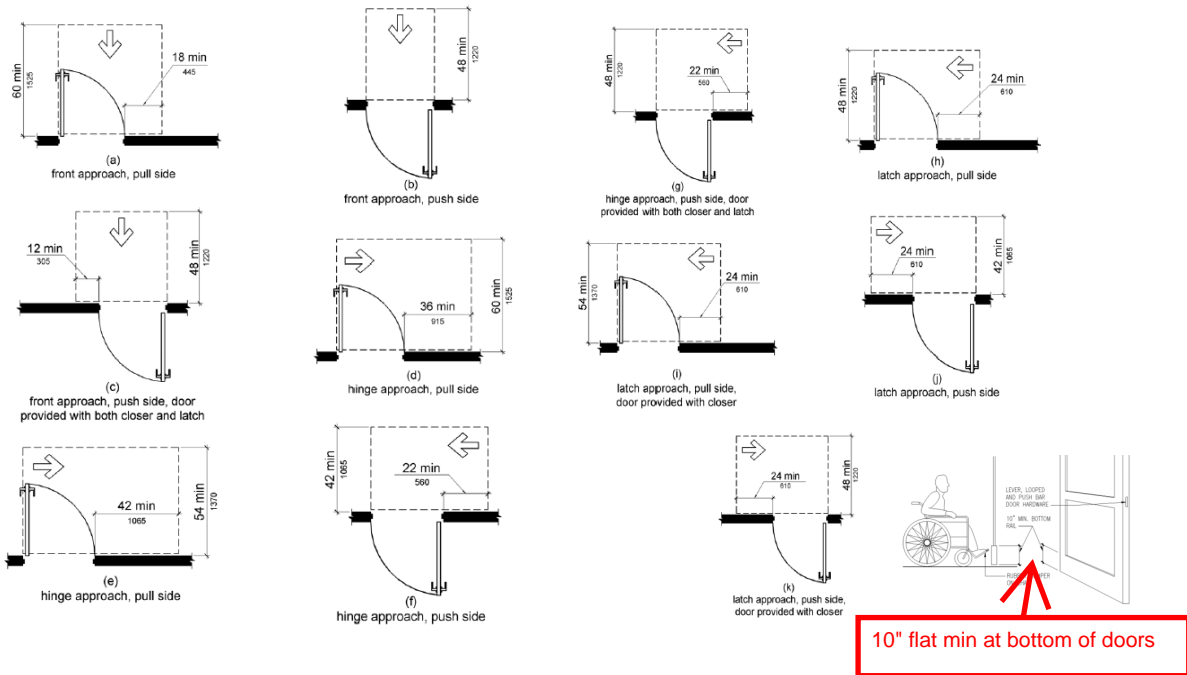
Do the signs have the correct Braille on them.



- Does the back door have a 1/2 to 3/4 “threshold with a flat area of concrete about 5’ out and 18” past the latch side of the door on the exterior?
- If there is a break room does the sink have the required knee space under it?

## Doors

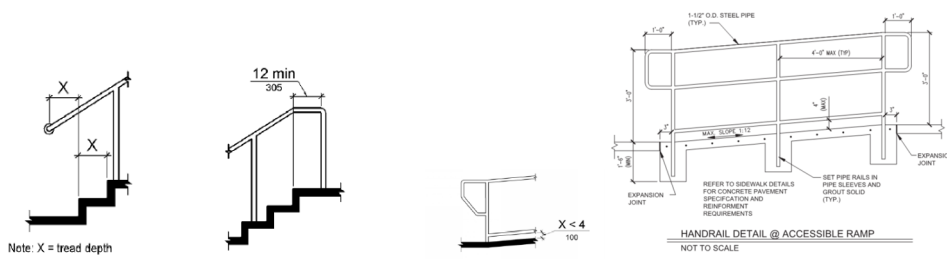
- **Important-** always always have a minimum of 18” on the pull side of every door. 20” is best. The sinks cannot be in the 18” clear area.



Ensure any vision glass/windows in doors is not higher than 43" MAX to bottom of glass.

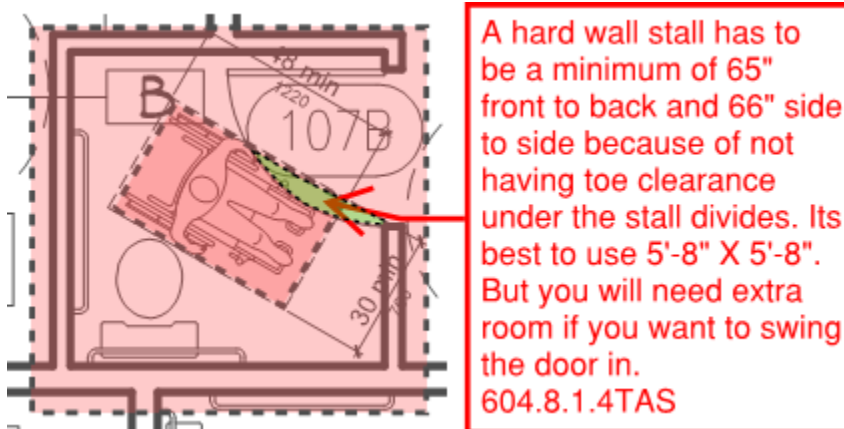
Do you have hand rails on both sides?

Steps and ramps-notice the 12" extensions on the top of the step and both ends on ramps.



Toilet stalls within a bathroom that come all the way to the floor. (Full wall stalls)

These are expensive to fix latter



604.8.1.4 Toe Clearance. The front partition and at least one side partition shall provide a toe clearance of 9 inches (230 mm) minimum above the finish floor and 6 inches (150 mm) deep minimum beyond the compartment-side face of the partition, exclusive of partition support members. Compartments for children's use shall provide a toe clearance of 12 inches (305 mm) minimum above the finish floor.

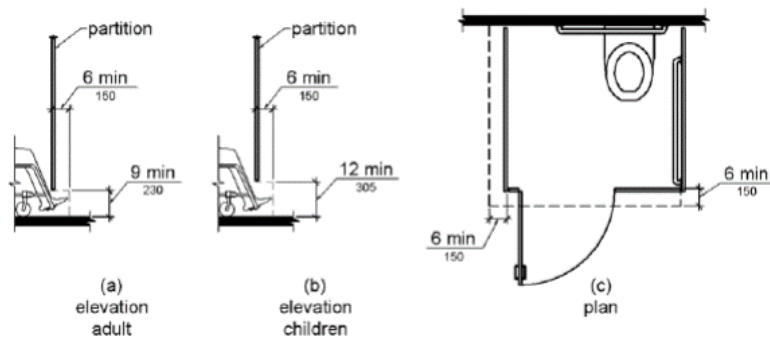
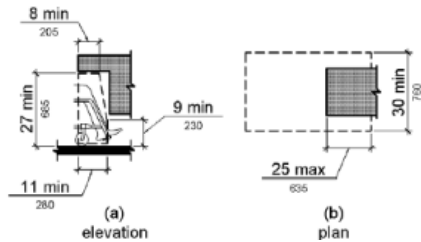


Figure 604.8.1.4 Wheelchair Accessible Toilet Compartment Toe Clearance

Dining- ADA says 5% of dining surfaces, Texas wants 5% of each type of dining surface.

226.1 General. Where dining surfaces are provided for the consumption of food or drink, at least 5 percent of the seating spaces and standing spaces at the dining surfaces shall comply with 902.

Advisory 902.1 General. Dining surfaces include, but are not limited to, bars, tables, lunch counters, and booths.



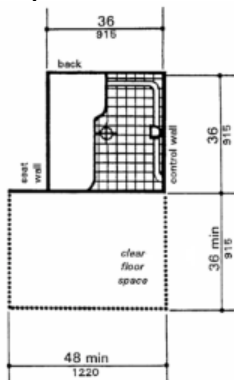
5% of seating at the bar is an area that we see problems with. These areas are required to have 17" of toe and knee space under it at a maximum height of 34". It cannot be isolated or placed in front of the cash register or used to store items.



ADA tables

Verify that you have a minimum of 30" between the legs.

Showers- this is also a problem area. Transfer showers need to be EXACTLY 36" X 36" with a 1/2" maximum threshold. Seats need to be on a clear floor side to have a 12" set back on the outside of the shower which will allow transfer. Controls need to be on the outer half of the wall above the grab bar which works best at 34" AFF. Adjustable hear down to 48" AFF. See TAS or ADA 608.1



For roll in showers see 608.2.2.1

Its better to ask and build once then to guess and build twice

Comments for discussion are always welcome- E mail to [TASbyJeff@gmail.com](mailto:TASbyJeff@gmail.com)

Jeff Gutknecht, RAS # 0472

## *New rules for parking signs and lettering on the accessible aisle*

*August 1, 2020*

### **68.104. Accessible Parking Spaces.** *(New section effective August 1, 2020, 45 TexReg 5166)*

(a) A paved accessible parking space must include:

(1) the International Symbol of Accessibility painted conspicuously on the surface in a color that contrasts the pavement;

(2) the words "NO PARKING" painted on any access aisle adjacent to the parking space. The words must be painted:

(A) in all capital letters;

(B) with a letter height of at least twelve inches, and a stroke width of at least two inches; and

(C) centered within each access aisle adjacent to the parking space; and

(3) a sign identifying the consequences of parking illegally in a paved accessible parking space. The sign must:

(A) at a minimum state "Violators Subject to Fine and Towing" in a letter height of at least one inch;

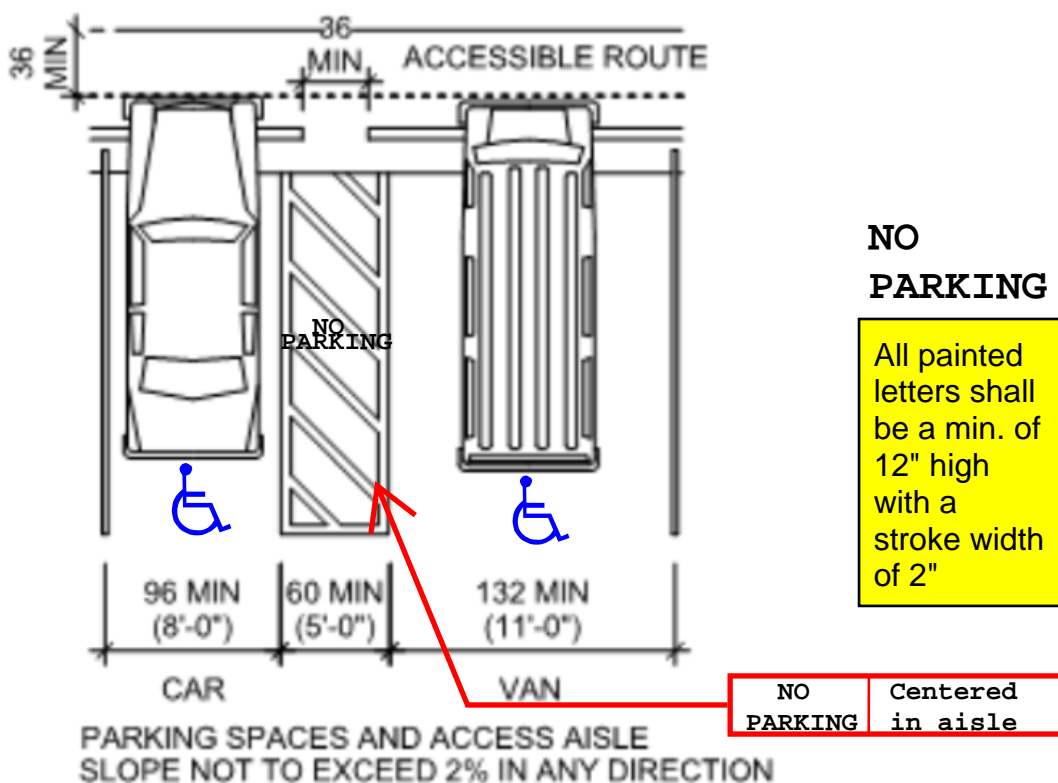
(B) be mounted on a pole, post, wall or freestanding board;

(C) be no more than eight inches below a sign required by Texas Accessibility Standards, 502.6; and

(D) be installed so that the bottom edge of the sign is no lower than 48 inches and no higher than 80 inches above ground level.

(b) A parking space identification sign that complies with Texas Accessibility Standards, 502.6, that includes the requirements in subsection (a)(3)(A) satisfies subsection (a)(3).

This New Parking Rule 68.104 goes into effect August 1, 2020



## PARKING SPACES

The **NO PARKING** is required to be written in all accessible aisles. Minimum Letter Height of 12" and minimum Stroke Width is 2". Centered in aisles.



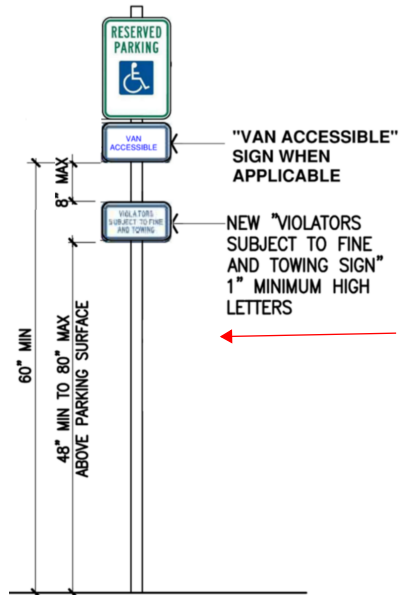
The international symbol must be painted on all accessible parking spaces.

### 68.104. Accessible Parking Spaces. (New section effective August 1, 2020, 45 TexReg 5166)

(a) A paved accessible parking space must include:

- (1) the International Symbol of Accessibility painted conspicuously on the surface in a color that contrasts the pavement;
- (2) the words "NO PARKING" painted on any access aisle adjacent to the parking space. The words must be painted:
  - (A) in all capital letters;
  - (B) with a letter height of at least twelve inches, and a stroke width of at least two inches; and
  - (C) centered within each access aisle adjacent to the parking space; and





New towing sign shall not be more than 8" under the Parking sign or VAN sign. Bottom of violations sign shall be 48" minimum off the ground.



The New sign must have at a minimum of "Violators Subject to Fine and Towing". Letter height at least one inch.

The bottom of the Accessible parking sign with the international logo on it can be moved up to a maximum of 80" AFF. This would allow you to move the NEW required Towing sign to a higher height if 48" interfered with walkways. The towing/Fine sign is required at all accessible parking spaces.

**68.104. Accessible Parking Spaces.** *(New section effective August 1, 2020, 45 TexReg 5166)*

(3) a sign identifying the consequences of parking illegally in a paved accessible parking space. The sign must:

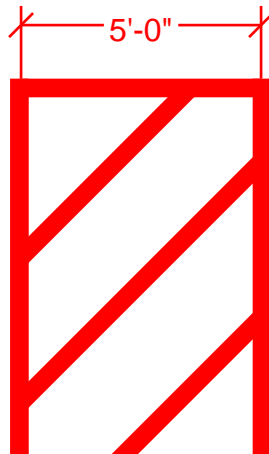
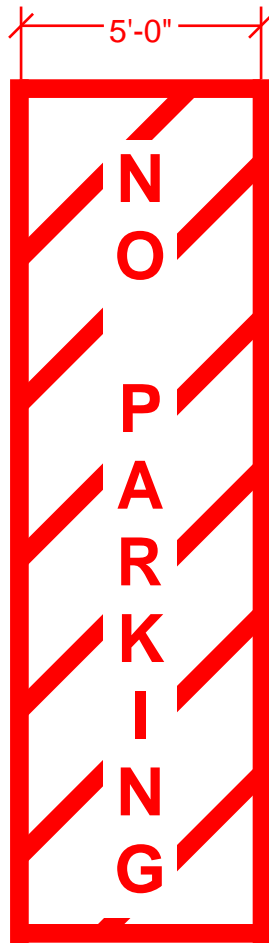
- (A) at a minimum state "Violators Subject to Fine and Towing" in a letter height of at least one inch;
- (B) be mounted on a pole, post, wall or freestanding board;
- (C) be no more than eight inches below a sign required by Texas Accessibility Standards, 502.6; and
- (D) be installed so that the bottom edge of the sign is no lower than 48 inches and no higher than 80 inches above ground level.

(b) A parking space identification sign that complies with Texas Accessibility Standards, 502.6, that includes the requirements in subsection (a)(3)(A) satisfies subsection (a)(3).

**VAN**



**REGULAR**



**NO  
PARKING**

