

TAS News Letter

Jeff Gutknecht RAS #472 | TASbyJeff@gmail.com | 214-808-9248

Visit our website

Full Wall Toilet Stalls- no toe space TAS/ADA 608.8.1.4

I want to talk to you about clarifying the **required clear floor space** differences between the standard accessible metal type toilet stall divides with 9" toe space under them **Compared** to the full wall framed accessible stalls with no toe clearance under the stall.

This picture is the Standard size accessible toilet stall that has the 9" minimum toe clearance under them that shows you the standard 60" wide X 59" clear floor space.

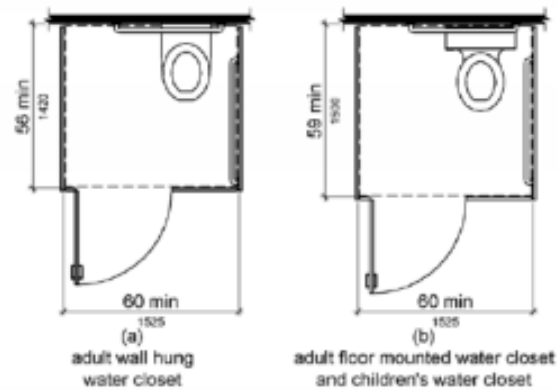


Figure 604.8.1.1 Size of Wheelchair Accessible Toilet Compartment

Full wall framed Toilet stalls- These are framed out, sheet rocked and in most cases tiled walls with no toe space provided

These full walled toilet stalls clear floor space requirements are often misinterpreted.

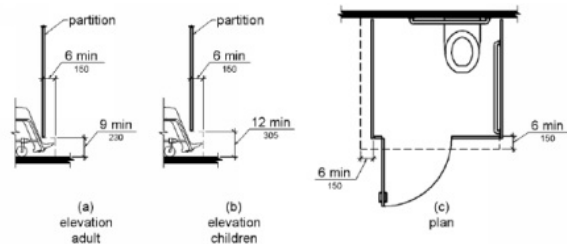
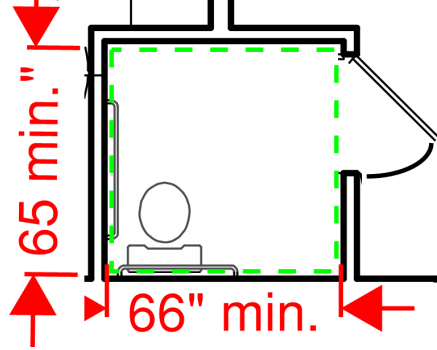


Figure 604.8.1.4 Wheelchair Accessible Toilet Compartment Toe Clearance

If you will look at detail (a) and (b) which shows a 6" min area that the toes can stick out beyond or under the standard metal type toilet stall divides, if this 9" min high space is not provided under the stall then the standard 60" wide X 59" long stalls clear floor space must be **increased by 6"**.

The reason the clear floor space **must be increased** when this toe space is eliminated in the full wall stall is to compensate for the loss of this 6" maneuvering clearance beyond or under the divides.

In detail (c) you can see the dotted lines that shows the **added 6"** that must be built into the inside of the full walled stalls to be compliant with TAS or ADA 604.8.1.4.



If you design a full wall in the access toilet stall this 66" min wide and 65" long min with a door that swings out is the absolute minimum finished size.

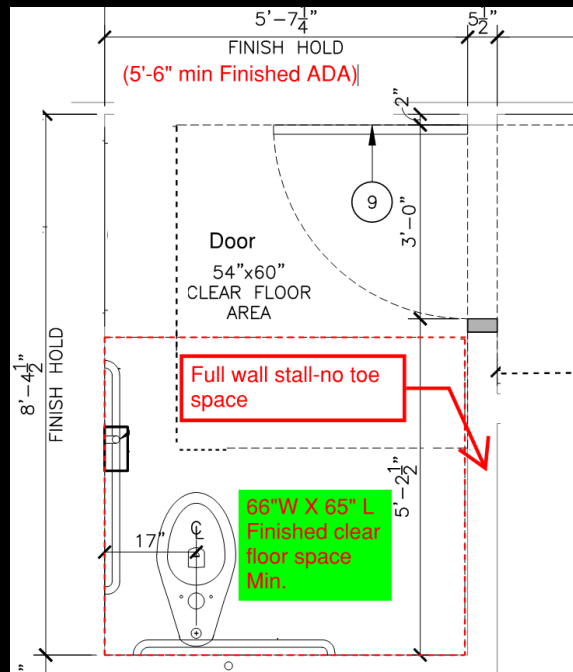
From our experience if the Architects dimension this exactly at 66" X 65", at the time of inspection we will often see 64" X 63". The reason is that the framers are picking up these dimensions, then when the sheet rock and tile is added to the walls they will not pass the inspection. These are **very expensive items to correct** later so it is my intent through the designers to help the GC's or framers.

It would be recommendable to always over dimension this type of stall by 1-1/2" to 2".

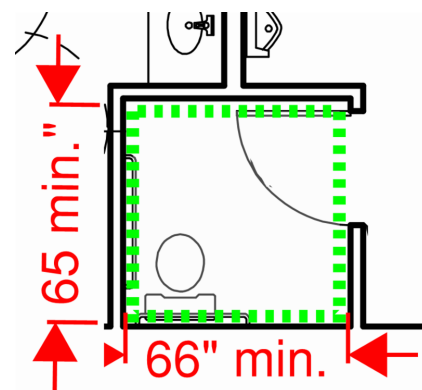
If you want to swing a door into a full walled stall you have to add door clearance outside of the 66" X 65" toilet clear floor space.

If you will notice the finished hold dimension in this drawing is 5'-7 1/4" hold.

Notice the red dotted line that shows the **clear floor space** for the toilet. By dimension the width at 5'-7 1/4" Hold, this will give you the space to have this 66" clear floor space built correctly the first time correctly.



This is an incorrect stall, the door cannot swing into the clear floor space. You could swing the door out or add room to the front or side so the door swing is outside of the green dotted areas.



- Great Service – 7-day turnaround on reviews
- Send all plans by PDF
- All comments are noted on Bluebeam and screenshots are added to the review comments for clarity

- Fast inspection services provided
- Please forward this newsletter to other Architects or GC's that may benefit from our information and may want to [join our newsletter](#)



Thank You.

We do not always have the time to come visit our customers as we would like, but we do appreciate your Business!

[Visit our website](#)

[Please join our newsletter](#)

Jeff Gutknecht, RAS #472

214-808-9248 Office