



Jeff Gutknecht RAS 472 | TASbyJeff@gmail.com | 214-808-9248



Providing excellence and knowledge of the TAS Standards.

Ask us a question you would like to see answered in one of our newsletters.

How can we help your company?

Newsletter for Clarification of TAS/ADA 308.2.2: Reach Ranges at Sinks

This Month's Standard:

308.2.2 Obstructed High Reach. Where a high forward reach is **over an obstruction**, the clear floor space shall extend **beneath** the element for a distance **not less than the required reach depth over the obstruction**. The high forward reach shall be 48 inches maximum where the reach depth is 20 inches maximum. Where the reach depth exceeds 20 inches, the high forward reach shall be 44 inches maximum and the reach depth shall be 25 inches maximum.

Note: Sinks and faucet controls are subject to 308.2.2. I am not focusing on the high reach range of this section. The intent of this newsletter is to clarify the distance to faucets in relation to the toe space under the sinks.

Discussion:

Question: Is there a **direct relation** between the end of the allowed toe clearance and the location or distance from the front of a counter that a sink faucet can be installed?

Answer: Yes. There is a direct relation between toe clearance, knee clearance, and the distance you are allowed to reach over a counter to access the faucet controls.

This may seem a little on the picky side, but if you are wanting to correctly design your sink cabinetry in a bathroom or break room with the slope type board for the finished look, then this is important. The incorrect designs usually occur when designing sink cabinets that are over 17" in depth. We seem to revert back to the standard design for 17" deep sink controls even when we are designing the controls at 22" + .

Supporting Standards that would apply:

306.1 General. Where space beneath an element is included as part of clear floor or ground space or turning space, the space shall comply with 306. Additional space shall **not be prohibited** beneath an element but **shall not be considered** as part of the clear floor or ground space or turning space.

306.2 Toe Clearance.

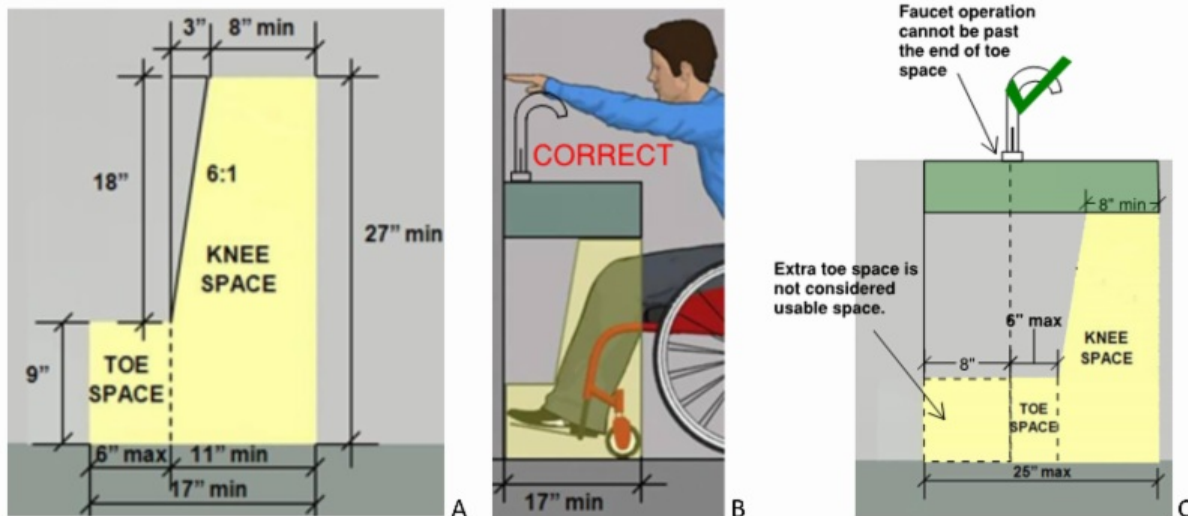
306.2.1 General. Space under an element between the finish floor or ground and 9 inches above the finish floor or ground shall be considered toe clearance and shall comply with 306.2.

306.2.3 Minimum Required Depth. Where toe clearance is required at an element as part of a clear floor space, the toe clearance shall extend 17 inches minimum under the element.

306.2.4 Additional Clearance. Space extending **greater than 6 inches beyond** the available knee clearance at 9 inches above the finish floor or ground **shall not be considered** toe clearance.

306.2.5 Width. Toe clearance shall be 30 inches (760 mm) wide minimum.

Let's first look at the correct design illustrations, and then we will discuss important areas of concern.



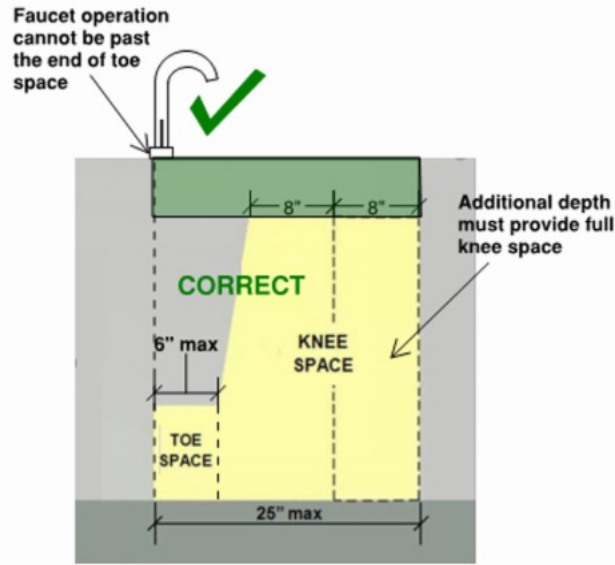
In these 3 illustrations you will notice that the standard knee and toe space is used properly in relation to the reach required to access faucet controls. In detail "C" notice the faucet is only 17" back from the front edge of the counter. I do see this scenario improperly used when a 24" deep counter is used and the controls are around 22" to 24" back. Realize that the extra toe space beyond the standard 6" maximum is not usable space like in detail "C" per 306.2.4 (see above).

NOTE: Make sure to always design the **full minimum 17" depth** whenever you are required to use a forward approach. I see the 6" toe space on occasion get blocked out.

Look at detail “D” and “E” below, you will notice that the standard 8-inch knee space just under the counter at a minimum of 27” AFF is increased to 16”. The 16” shall be designed into the cabinet design to allow for proper pull under clearance. The knee space is what has to be **increased proportionately** to the distance beyond the standard 17” knee space to a faucet location.

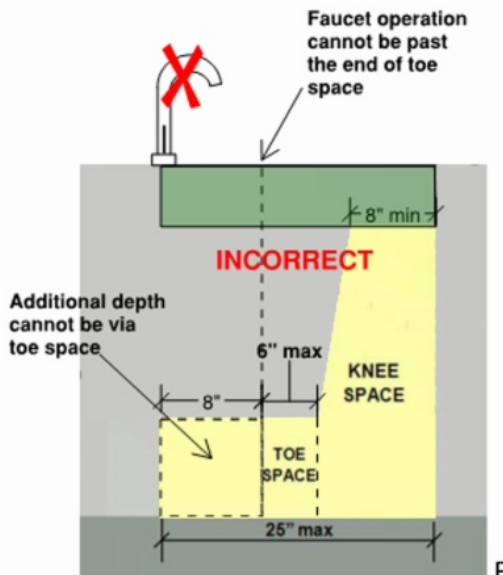


D

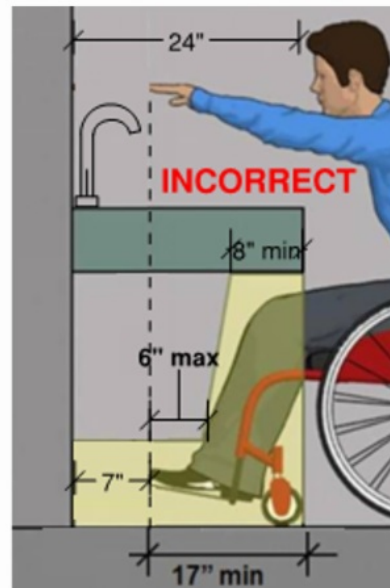


E

Let’s look at the incorrect designs below to notice the deficiencies with the design. In details “F” and “G” you will notice that the toe space runs all the way back to the wall, but the standards only allow you to recognize the first 6” for toe space, so the additional space beyond the 6” maximum cannot be counted to access the faucet. Notice that the hand reach cannot extend further than the end of the toes.



F



G

How Can We Help You?

- Great Service – 7-day turnaround on reviews. We know your time is important (you will like our clear and concise review method)

- Send all plans by PDF

- All comments are noted on Bluebeam and screen shots are added to the review comments
- Communication and common sense - Knowledge and experience working for you
- Competitive Pricing

Comments for discussion are always welcome - E mail to: TasByJeff@gmail.com

Thanks to all my good customers.

If you are not a regular customer of ours yet, **Reply**, and ask for a sample of our informative style of plan reviews.